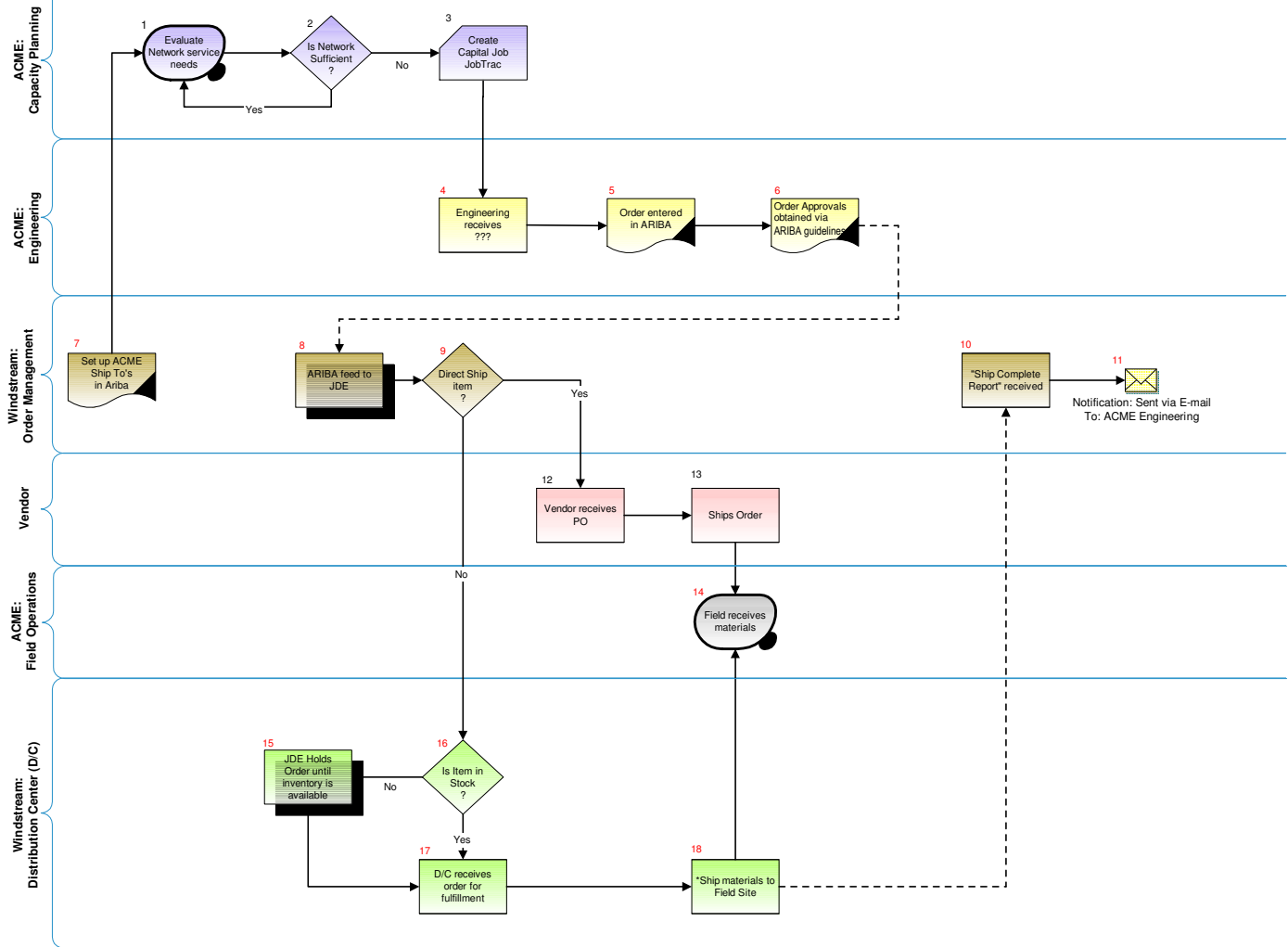
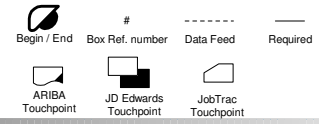
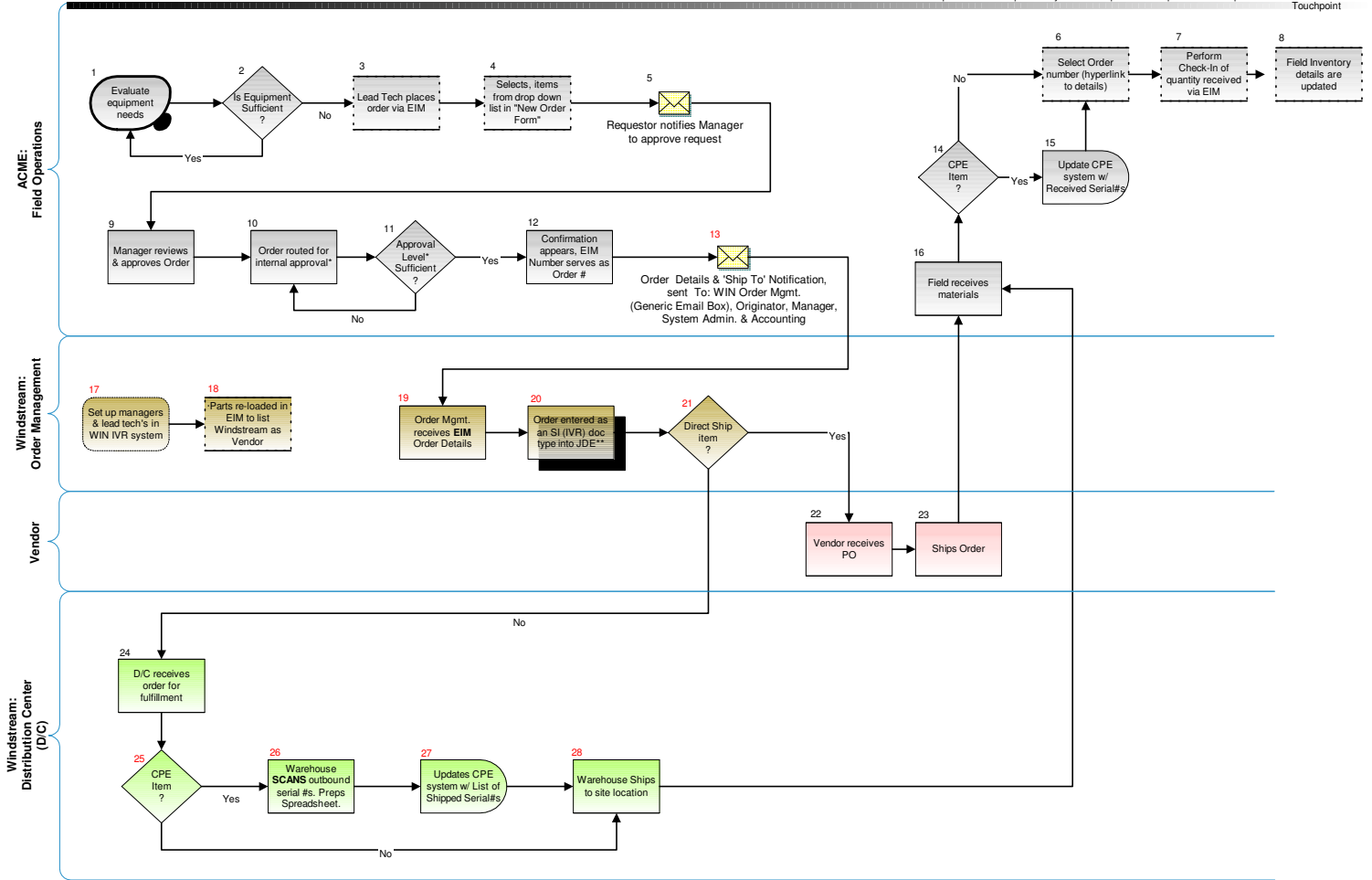
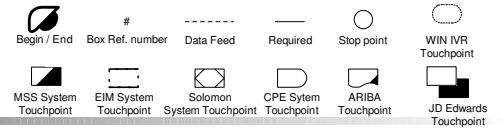


# ACME Infrastructure: TOBE Lifecycle



\* All Materials must ship complete

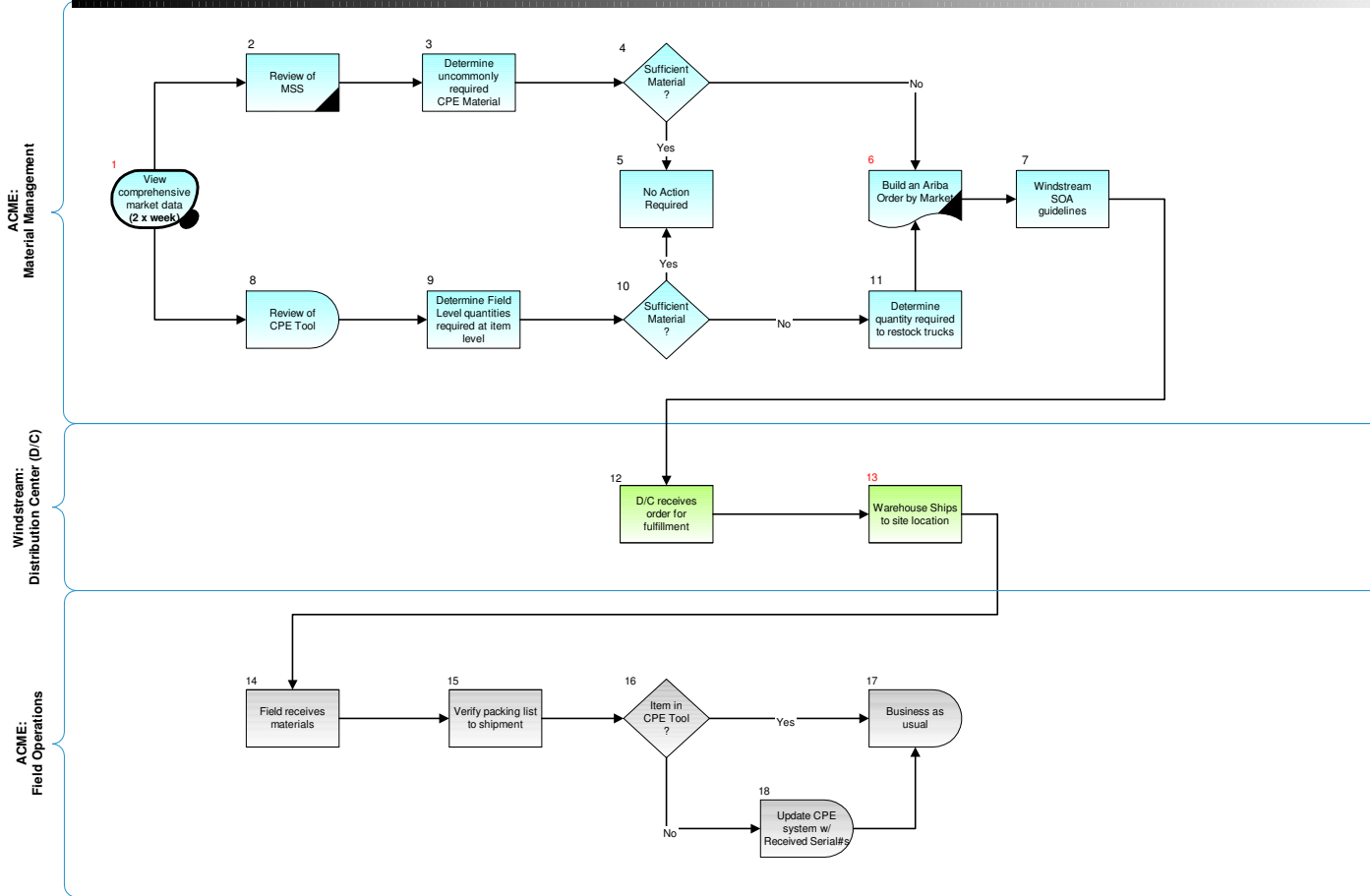
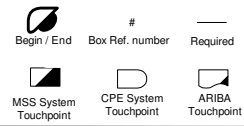
# ACME EIM: TOBE Lifecycle



\* Order approved according to ACME schedule of approval, level 1 = NOM, level 2 = Director or Director Designee  
 \*\* Order Management team enters order as an SI (IVR) doc type into JD Edwards on behalf of ACME Local Manager, Ship To, will be ACME Tech site.

EIM Equipment Inventory Management, Web application  
 Generic Email Box windstream.ACME@windstream.com

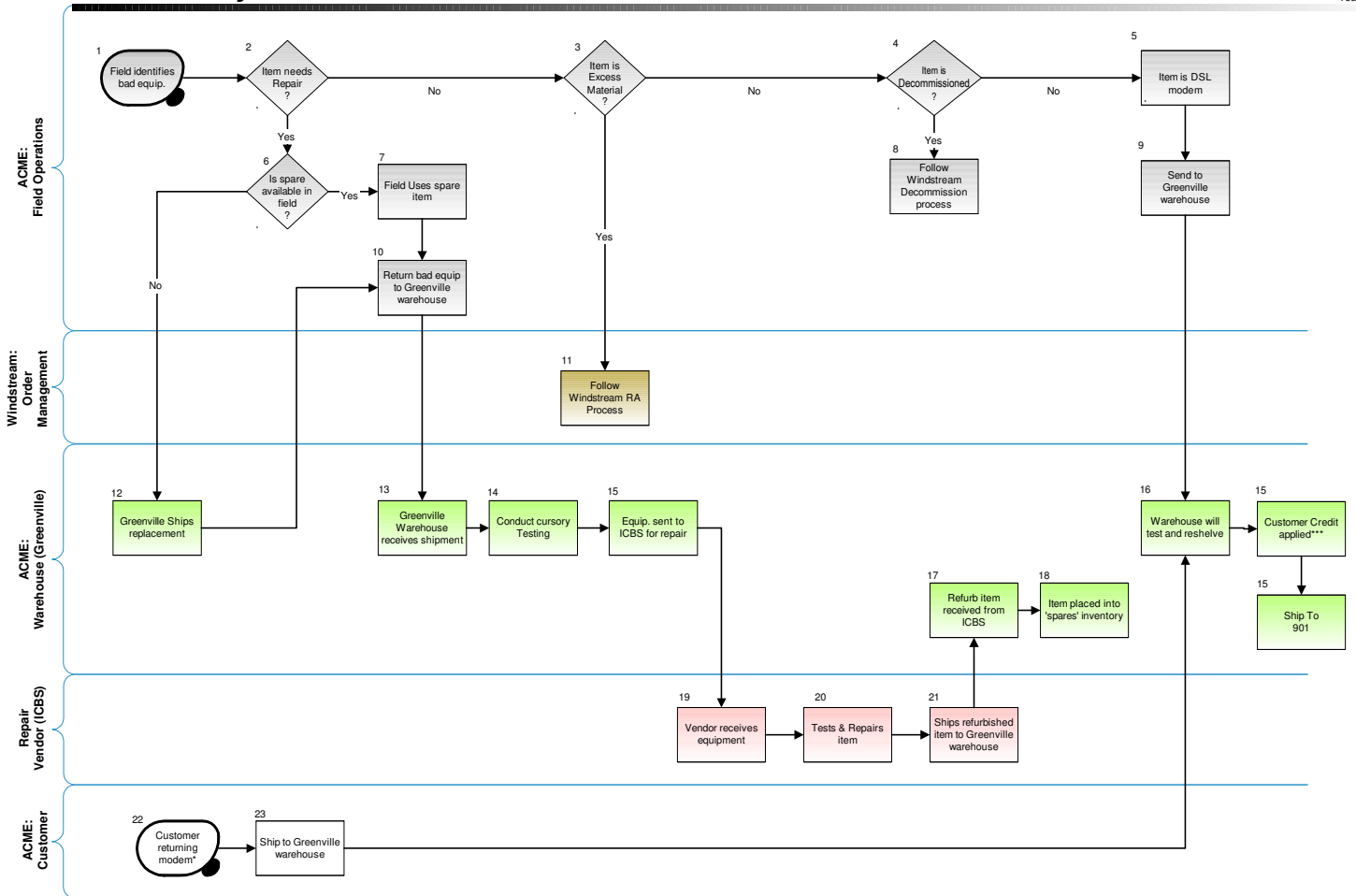
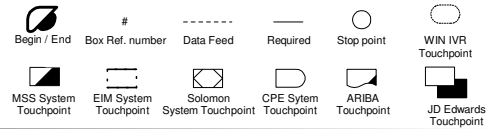
# ACME CPE Replenishment & Ordering: TOBE Lifecycle



Actions:  
 1 Set Minimum of Common Truck Stock.  
 2 Draw down Uncommon to maintain spares.

CPE : Customer Premis Equipment Web Application

# ACME: Reverse Logistics TOBE Lifecycle



\* Customer may have return due to bad equipment or per agreement (ACME requires customer to return DSL modems upon contract cancellation)